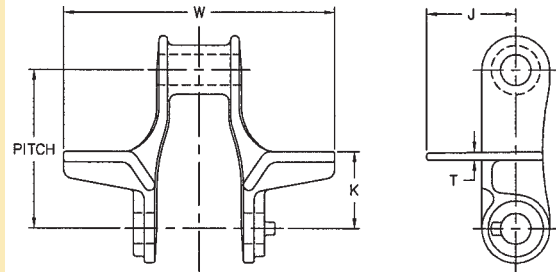
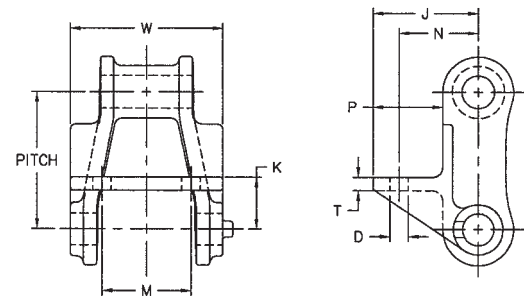


400 CLASS PINTLE CHAIN ATTACHMENTS



F16 ATTACHMENT

MOLINE ATTACHMENT NO.	DIMENSIONS IN DECIMAL INCHES					AVERAGE WEIGHT PER FOOT LBS.
	PITCH	J	K	T	W	
477-F16	2.308	1.38	1.25	0.19	4.12	3.3



F2 ATTACHMENT

MOLINE ATTACHMENT NO.	DIMENSIONS IN DECIMAL INCHES										AVERAGE WEIGHT PER FOOT LBS.
	PITCH	D		J	K	M	N	P	T	W	
		BOLT DIAMETER	HOLE DIAMETER								
445-F2	1.630	0.19	0.22	1.28	0.62	1.06	0.94	0.91	0.16	1.50	2.0
455-F2	1.630	0.19	0.22	1.25	0.62	1.06	0.94	0.81	0.16	1.81	2.7
462-F2	1.634	0.19	0.22	1.31	0.62	1.06	1.00	0.81	0.16	2.09	2.5
477-F2	2.308	0.31	0.34	2.00	0.75	1.75	1.44	1.50	0.25	2.62	3.7
488-F2	2.609	0.31	0.34	1.97	1.06	2.03	1.38	1.50	0.28	2.88	4.5
4103-F2	3.075	0.38	0.41	2.66	1.25	2.22	2.00	1.91	0.31	3.12	8.1

Allied-Locke Industries Inc. . . . chain - sprockets - buckets www.alliedlocke.com